



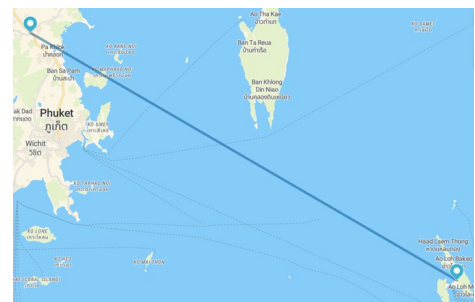
Thailand, 10 Days · Tailor-made including beach holiday

## Phuket and Phi Phi

The beaches of Phuket, the island with the most possibilities for discovering amazing seascapes and fully enjoying the tropical nights. The beaches of Phi Phi, a set of small islands with steep cliffs and wild nature ideal for those days of summer holiday that you need to relax.

**Departure date:** Departures from June 2026 till May 2027

**From:** London, Birmingham, Manchester, Glasgow, Edinburgh



EXOTIC

### Travel details

#### ● DAYS 1 - 4 · PHUKET

Day 1: City of origin - Phuket. Departure with destination Phuket. Night on board.

Day 2: Phuket. Arrival and transfer from the airport to the selected hotel in Phuket by your own account. Free time. Overnight stay.

Day 3: Phuket. Free day. Overnight stay.

Day 4: Phuket. Free day. Overnight stay.

#### ● DAYS 5 - 7 · PHI PHI

Day 5: Phuket - Phi Phi. Transfer from selected hotel in Phuket to selected hotel in Phi Phi by your own account. Free time. Overnight stay.

Day 6: Phi Phi. Free day. Overnight stay.

Day 7: Phi Phi. Free day. Overnight stay.

#### ● DAYS 8 - 10 · PHUKET

Day 8: Phi Phi - Phuket. Transfer from selected hotel in Phi Phi to selected hotel in Phuket by your own account. Free time. Overnight stay.

Day 9: Phuket - City of origin. Transfer to the airport by your own account. Flight to City of origin destination. Night on board.

Day 10: City of origin. Arrival. End of the trip and our services.

## Your trip includes

---

### Your trip includes

- ✓ Return flight.
- ✓ Stay in selected hotel in Phuket.
- ✓ Selected meal plan in Phuket.
- ✓ Stay in selected hotel in Phi Phi.
- ✓ Selected meal plan in Phi Phi.
- ✓ Insolvency protection.

### Your trip doesn't include

- ✗ From May 1, 2025, all travelers must complete the Thailand Digital Arrival Card (TDAC) online before arriving in the country, via the following link: <https://tdac.immigration.go.th>
- ✗ Transfer from the airport to the hotel in Phuket.
- ✗ Transfer from hotel in Phuket to hotel in Phi Phi.
- ✗ Transfer from hotel in Phi Phi to hotel in Phuket.
- ✗ Transfer from the hotel in Phuket to the airport.

## Destinations Visited

---

Phuket



Phi Phi



## Important remarks

---

- Triple rooms in Thailand are generally rooms with twin beds or a double, in which a folding bed is installed to accommodate the third person. Due to the inconvenience this causes, we advise against using this option as far as possible.
- Please check with your international vaccination centre about the recommended healthcare measures in Thailand.
- The law in Thailand only allows entry into the country with one carton of tobacco per person.
- Depending on the return flight, the trip may be one day longer.
- Triple rooms in Asia are generally rooms with twin beds or a double, in which a folding bed is installed to accommodate the third person. Due to the inconvenience this causes, we advise against using this option as far as possible.
- Check-in time at the hotel on the day of arrival depends on each establishment, but in no case will it be before 3:00 p.m., unless otherwise indicated.
- A credit card is considered a guarantee, so sometimes you will need one for check-in at hotels.
- Hotels usually have cots available. Otherwise, babies will have to share a bed with an adult.
- Consult the necessary documentation to enter the destinations visited and for transit in the countries where air stopovers are made.